



WORLD DEVELOPMENT REPORT 2019

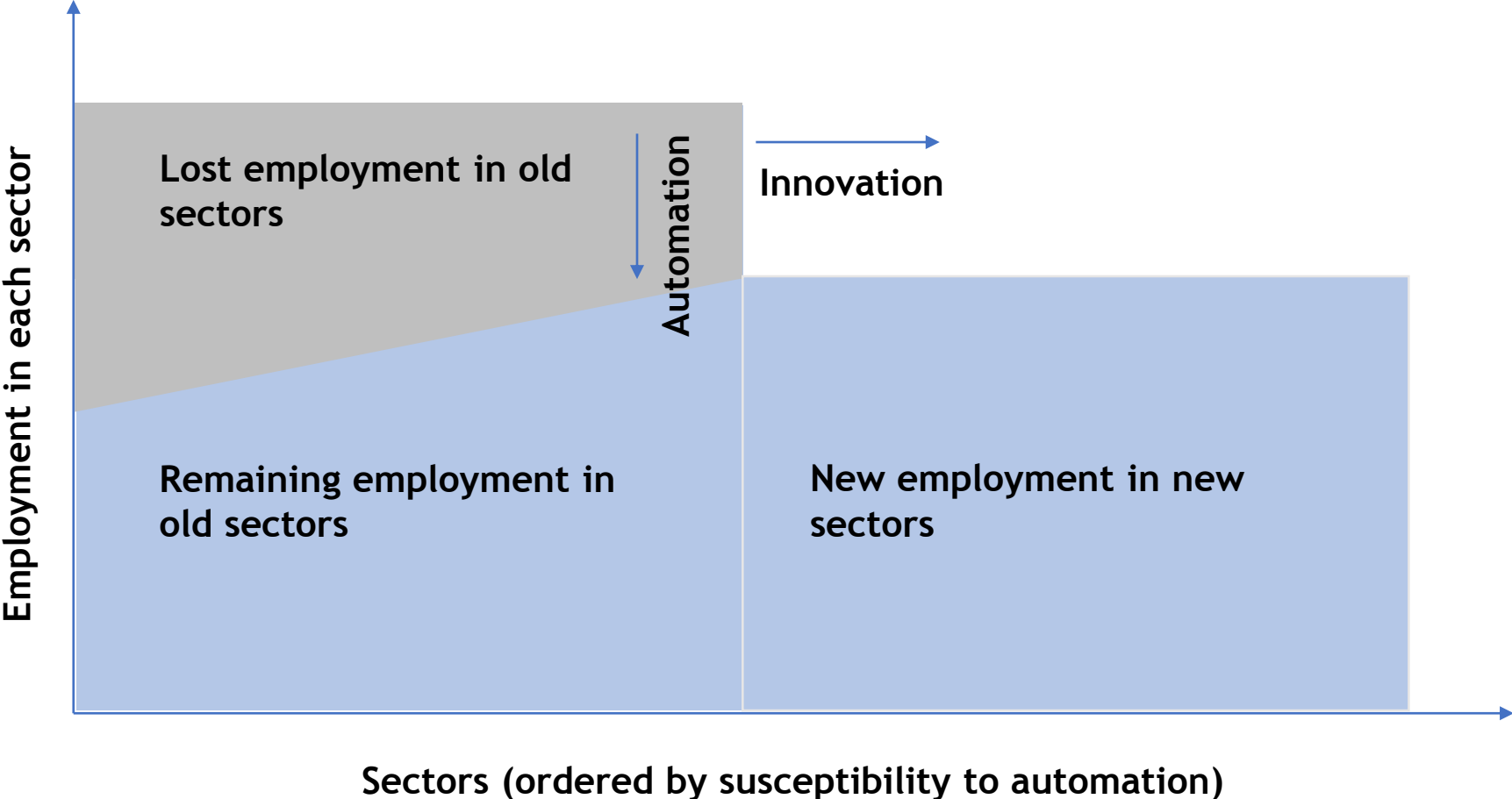
THE CHANGING NATURE OF WORK

Thessaloniki, May 17



WORLD BANK GROUP

Technological Progress Can Expand Job Opportunities

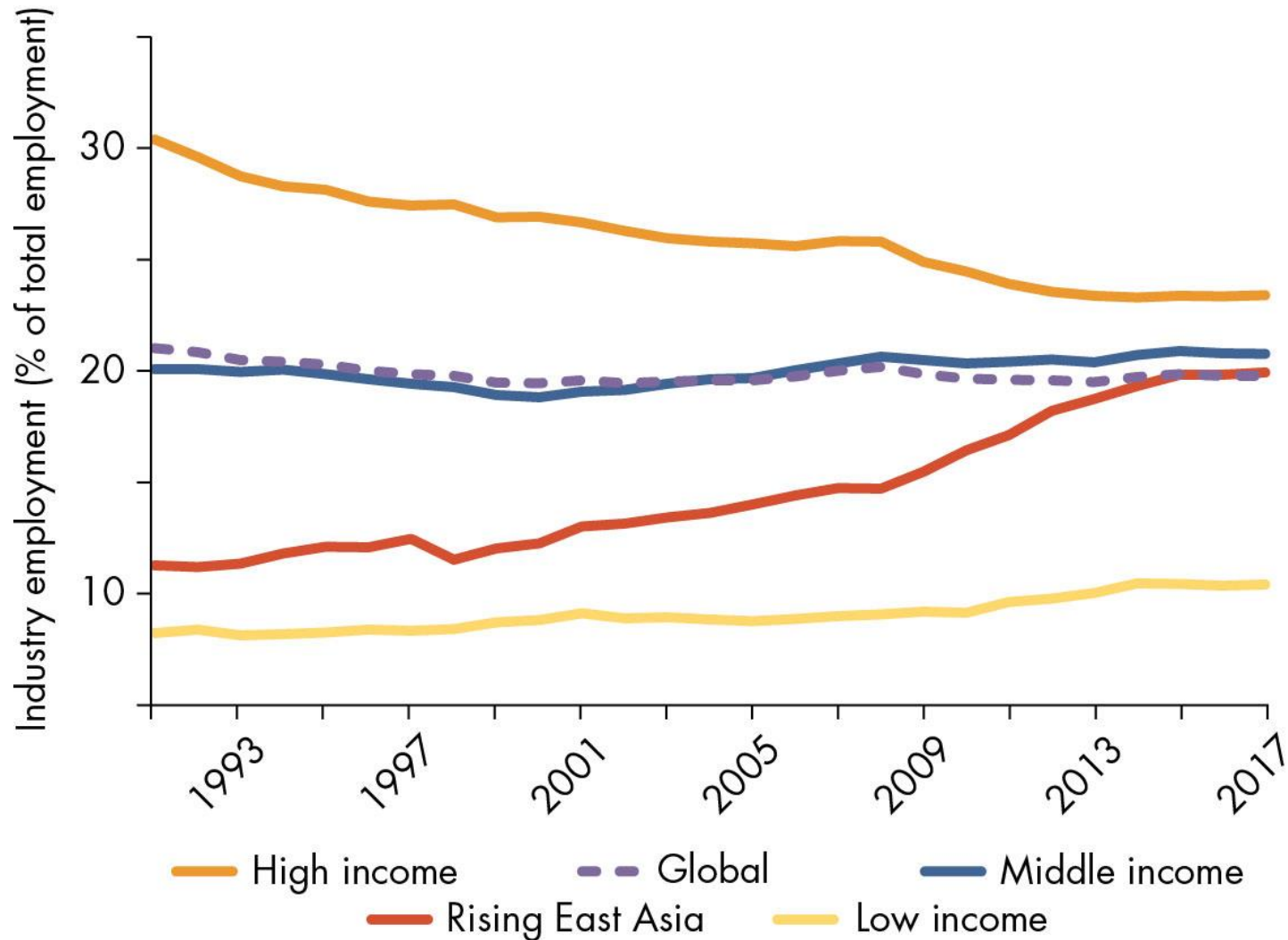


Source: Authors' analyses.



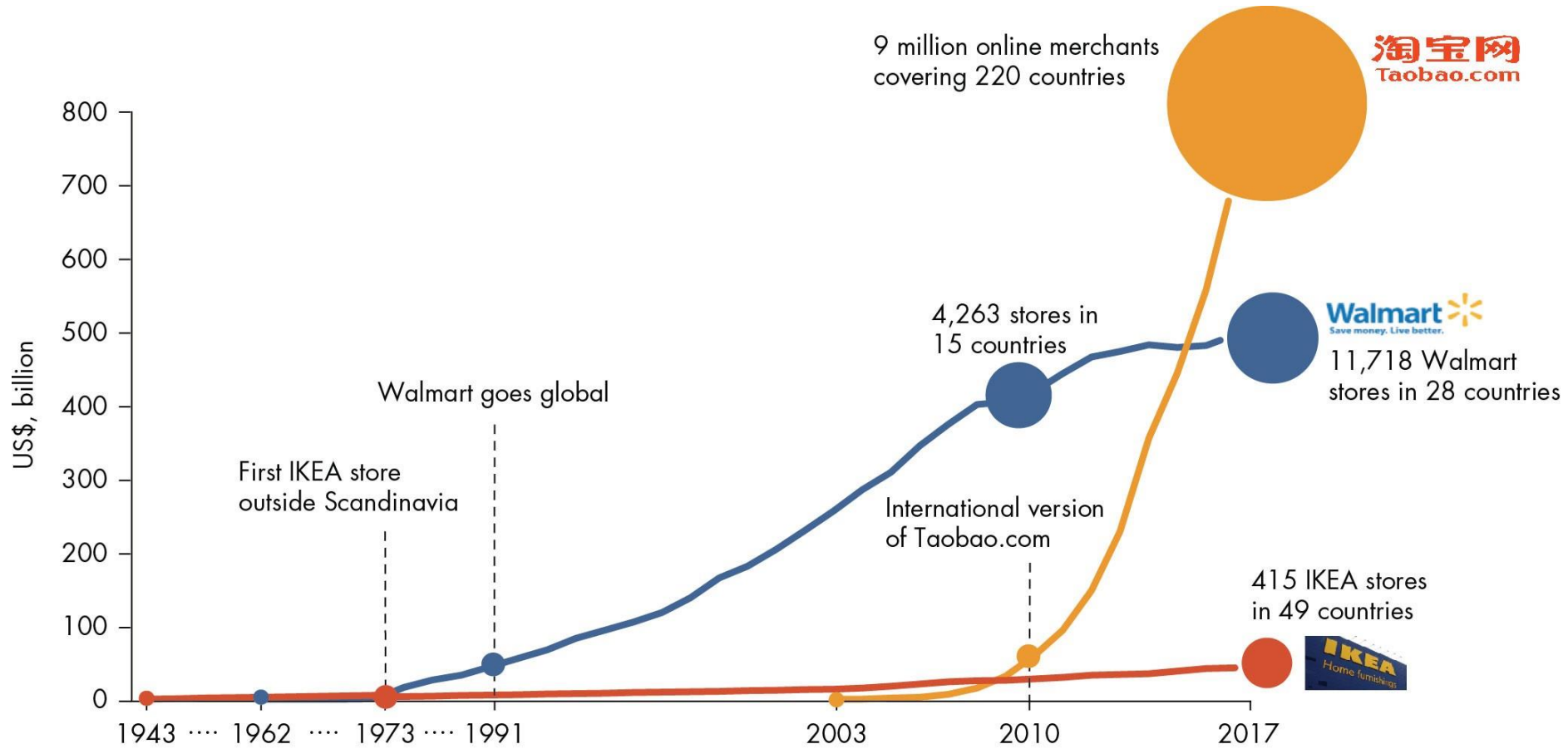
**What is
changing?**

Industrial Jobs are Falling in the West and Rising in the East



Source: Authors' analyses based on World Bank's World Development Indicators (dataset)

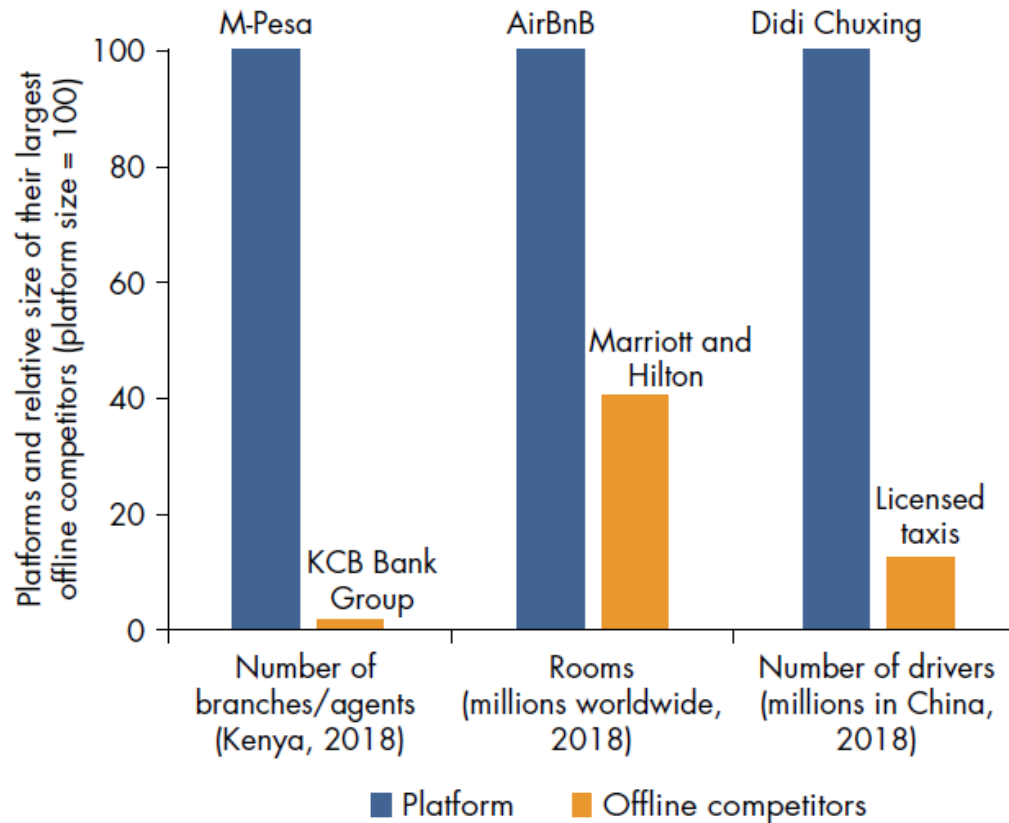
Recent Technological Advances Accelerate Firm Growth



Source: Authors' analyses based on Walmart Annual Reports, Statista.com, NetEase.com

Technology Is Disrupting the Nature of Firms Posing New Policy Challenges

New Superstar Firms: digital platforms operating globally, existing in the cloud



Source: Author's analysis based on data from Safaricom, KCB Bank Group, Airbnb, Marriot International Inc., Financial Times.

A painting depicting three men in suits and hats standing in a workshop or factory. They are gathered around a large sheet of paper, possibly a blueprint or document. The man on the left wears a green hat and a light blue suit. The man in the center wears a black bowler hat and a dark suit. The man on the right wears a white hat and a dark suit, and is holding a pipe. In the background, there are various mechanical parts, a gauge, and a workbench with tools. The overall scene suggests a moment of collaboration and planning in an industrial setting.

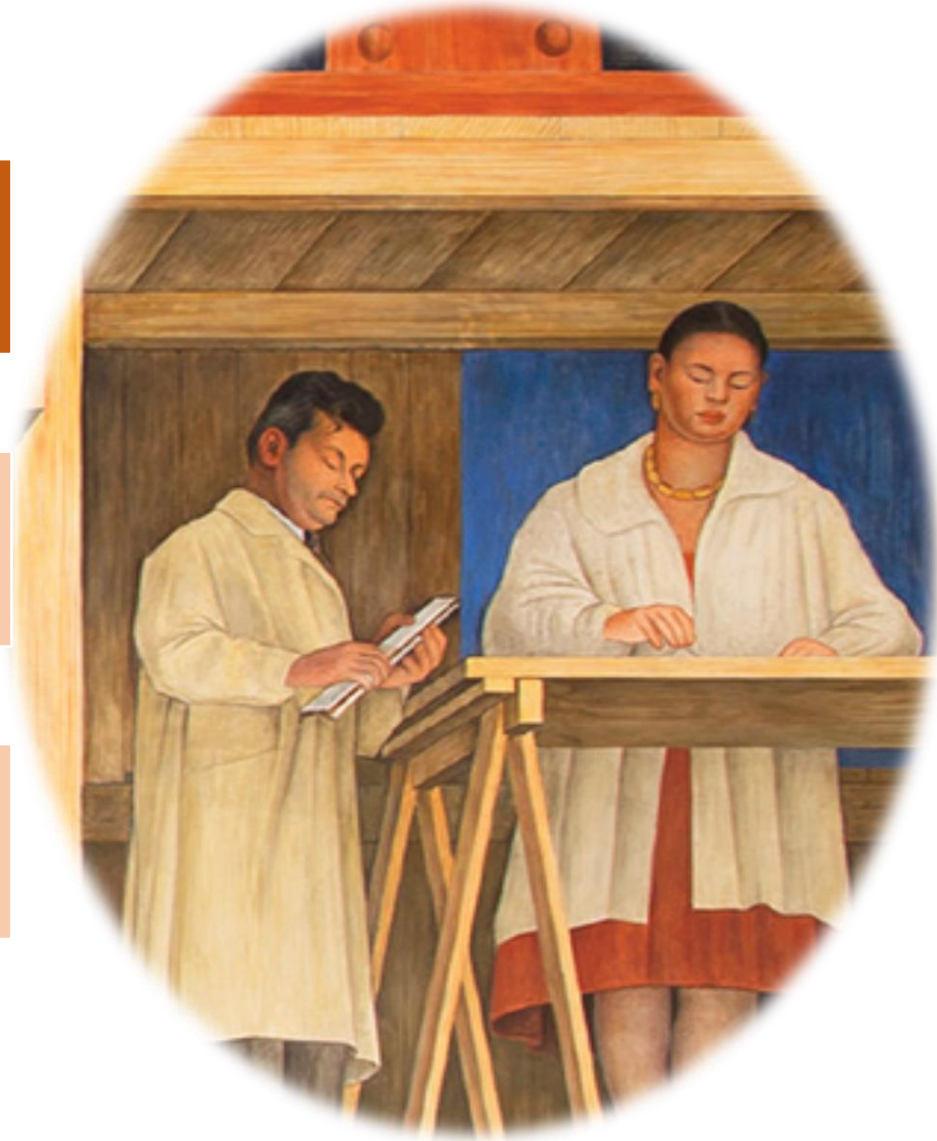
**What can
governments
do?**

Three Areas For Policy Action:

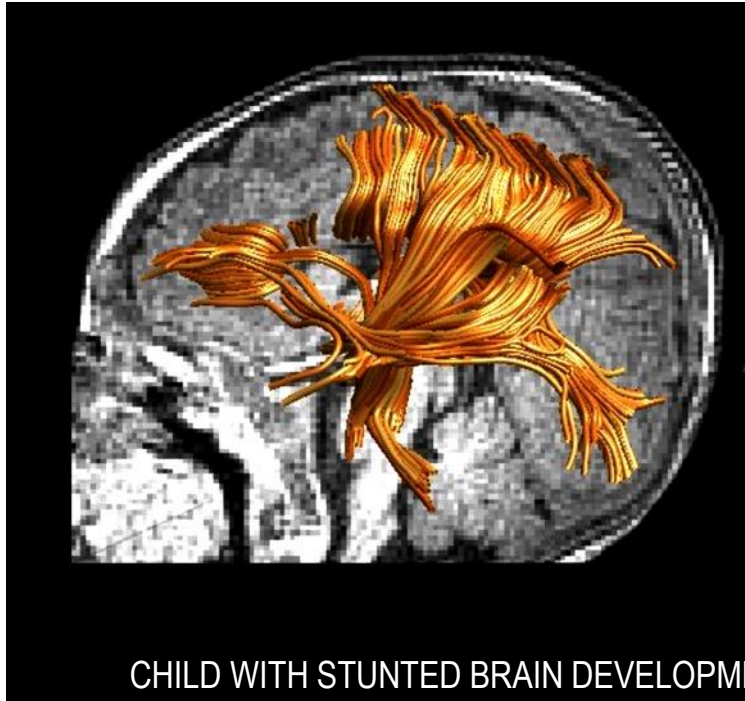
Human Capital and
Lifelong Learning

Social Protection
and Labor Policies

Revenue
Mobilization



The First 1,000 Days Lay A Lifelong Foundation



Source: Authors' analyses.

Three Areas For Policy Action:

Human Capital and
Lifelong Learning

Social Protection
and Labor Policies

Revenue
Mobilization



Convergence in the nature of work? Persistent informality and more fluid labor markets



More than 65% average informality in emerging economies

Three Areas For Policy Action:

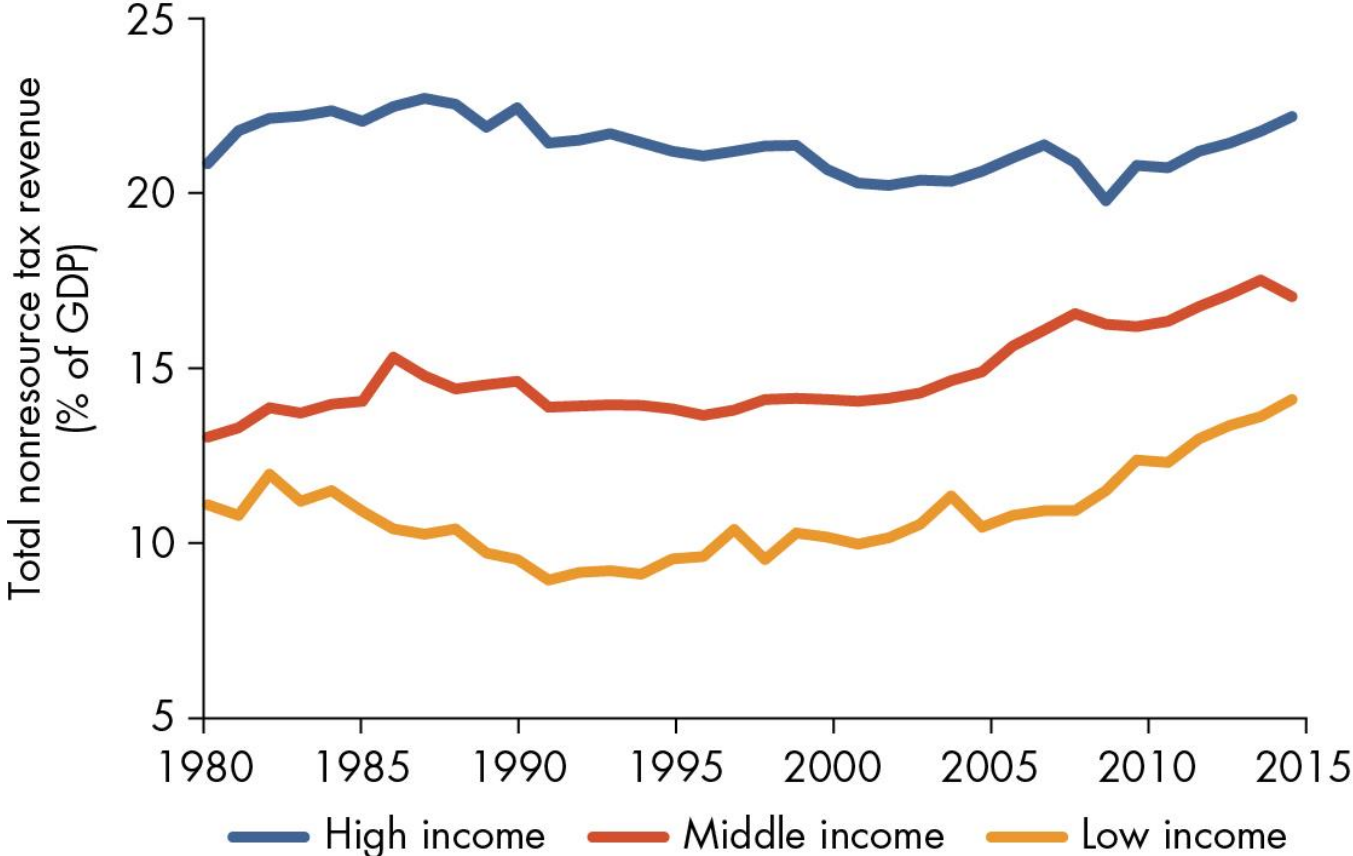
Human Capital and
Lifelong Learning

Social Protection
and Labor Policies

Revenue
Mobilization

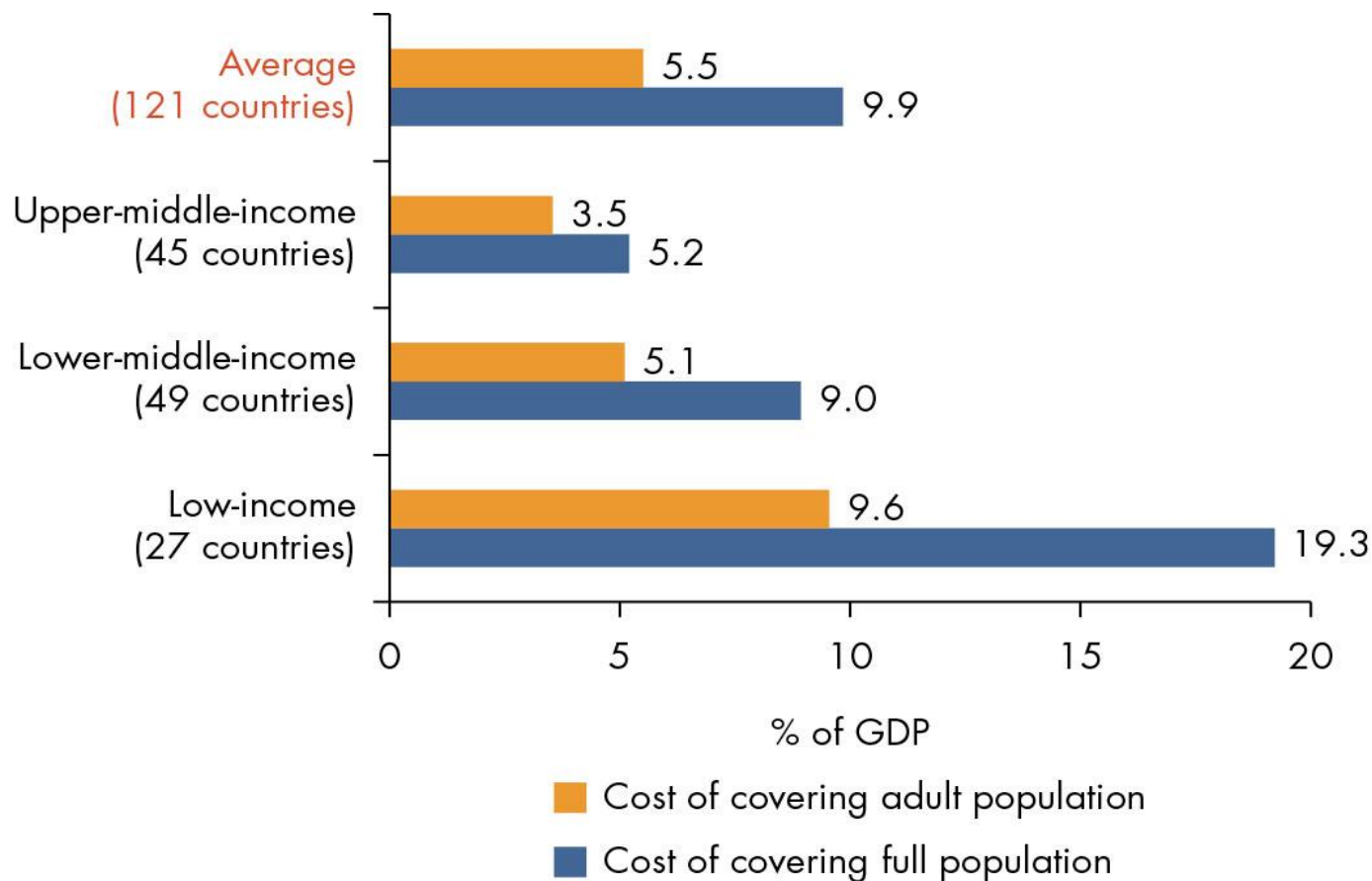


Tax Revenues Have to Rise, Especially in Developing Economies



Source: Authors' analysis based on International Centre for Tax and Development (ICTD) and UNU-WIDER Government Revenue Dataset 2017.

Social Inclusion Is Costly



Simulated cost of UBI for closing the poverty gap by country income group (% of GDP)

Source: Authors' analysis based on World Bank World Development Indicators, World Bank PovcalNet, and United Nations World Population Prospects.

2019 World Development Report



<http://www.worldbank.org/en/publication/wdr2019>